

Chapter 10: Creating the PeerApp Installation Media

PeerApp appliances are installed using a custom disk-on-key. This chapter specifies the steps required to create this installation media.

Before Creating the Installation Media

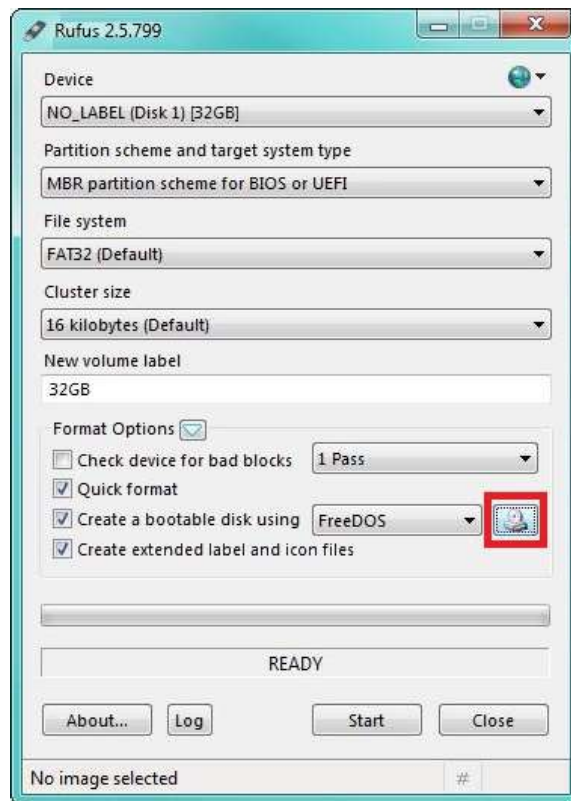
Before creating the installation media, obtain the following:

- A 16GB disk-on-key. The currently tested disk-on-keys are Kingston DT R500 16GB, Kingston DT R3.0 16GB (USB3) and SanDisk Cruzer Micro 16GB (SDCZ6-016G), which is updated with the appropriate content as outlined in the following procedure.
- The PeerApp distribution image, packed and zipped as an ISO file which contains the server customized operating system image and installation tools. Obtain this file from your customer support representative.
- A bootable disk-on-key creation tool. The currently tested tool is Rufus. Download the latest version from <http://rufus.akeo.ie/>

Creating the Disk-on-Key

To create the disk-on-key content:

- 1 Download Rufus to create a bootable USB
 - Run the Rufus executable file.
- 2 From the main screen,
 - Verify the proper USB size to avoid data loss
 - Click the CD ROM icon to choose an ISO file.



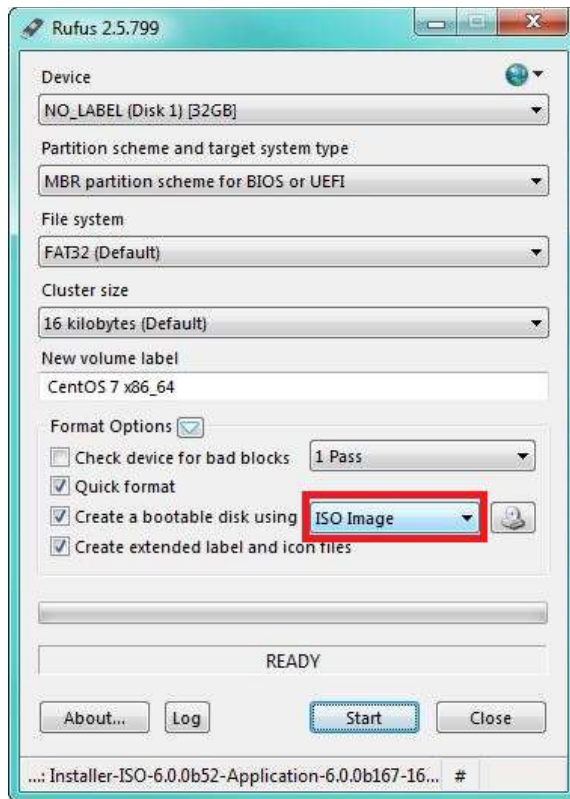
ISO Icon Install Screen

3 Choose an applicable ISO file, as displayed in the example below:

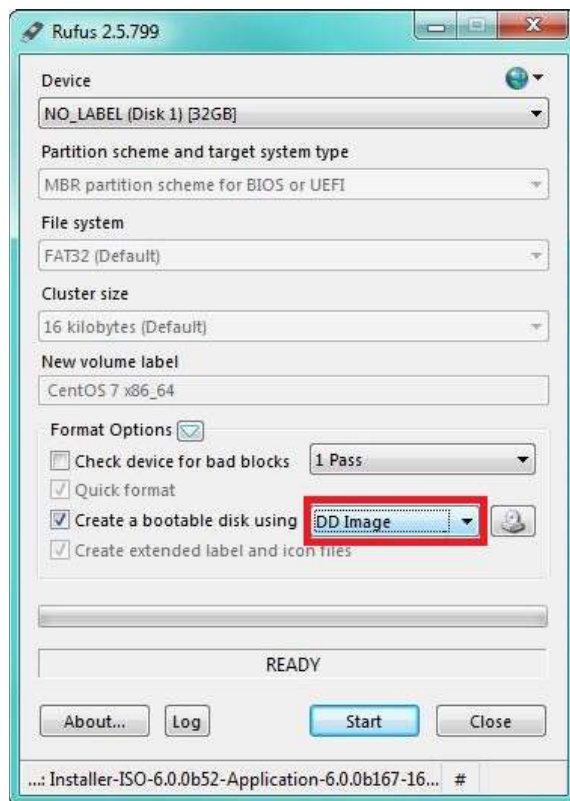
Installer-ISO-6.0.0b49-Application-6.0.0b163-164.iso	11/25/2015 6:17 PM	iso Archive	5,337,088 KB
Installer-ISO-6.0.0b52-Application-6.0.0b167-168.iso	12/2/2015 11:37 AM	iso Archive	5,337,088 KB

Open File Security Warning

- 4 From the Rufus main menu,
- Click the ISO image drop-down box
 - Choose the *DD* image.
 - Click **Start**



ISO Image Drop-Down Box



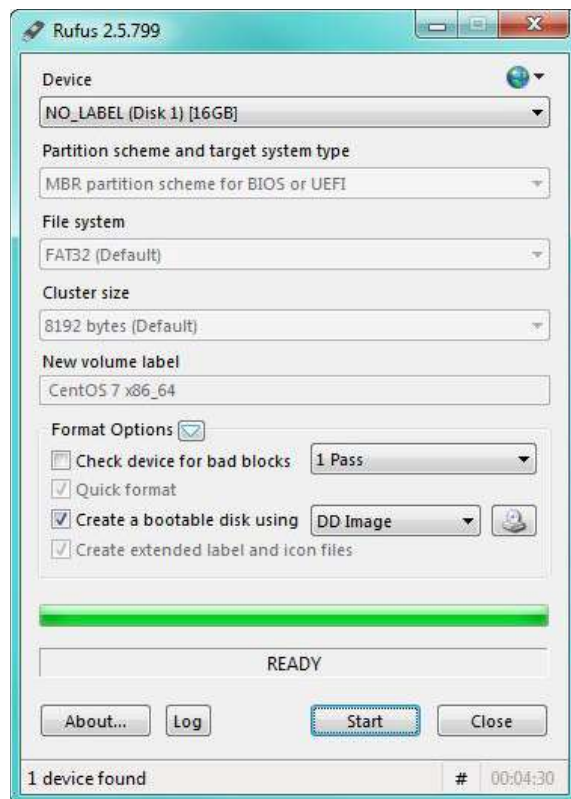
Rufus Installation Complete

- 5 At the warning message,
 - Click **OK**.



Warning: All Data Will Be Lost screen

Note: Wait as the image is copied (this can take up to 20 minutes).



Wait as the image is copies

The disk-on-key is now ready and can be used in the installation process.

IMPORTANT! After the Disk-On-Key was created, Verify it is boot-able
